

The Great Schuss

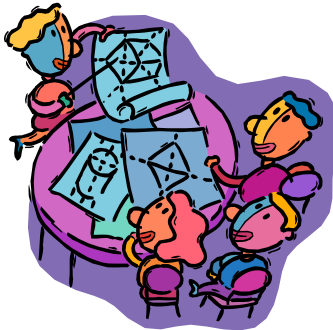
August, 2011

Jan Clark, Editor



August Meeting, Meal and Trip Sign-Ups!

Ski season officially begins in the sweltering heat and humidity of a typical August day in Lexington. Join us at the Racquet Club, Tuesday, August 2nd for a cook-out and 2012 trip sign-ups. If your dues for 2011-12 are paid at or before the meeting the meal will be on us. If not, the cost will be \$5.00. Review the trip offerings in this newsletter and come ready to register for the trip(s) of your choice. Social hour at 6:00, Meeting starts at 7:00.



LSSC Board to Meet August 10th!

The LSSC Board will be meeting August 10th at 6:30 p.m. at the home of Catherine Monzingo, LSSC President.. All Board meetings are open to LSSC membership so if you have issues you would like to bring to the Board, or if you just want to observe, come on by! We generally conclude by 9:00 p.m. Voting is limited to Board members only but input is encouraged by all! Contact Catherine for directions at camonzingo@yahoo.com

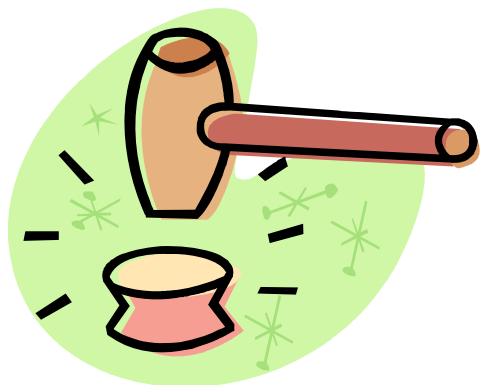
Membership Notes

As of July 16th, I would like to welcome returning members Tommy G., Vicki C., Charles C., Lisle D., Tom D., Linda G., Dixie R.H., Jesse S., and Jim S.. If you have sent me your membership application and your name doesn't appear above, it just means that I haven't received it yet. Look for your name to appear in the next newsletter. And don't be left out. Come to our August 2nd meeting, complete your membership application and pay your \$25 dues. 2011/2012 Members will receive free food. Procrastinators beware, our dues are \$40 after our October meeting. Clearly, there are perks for those who join LSSC early.....free food and less \$\$\$\$\$. Seems kind of like a "no brainer" to me. Do you have friends, co-workers or family who would like to join? New members who sign up for one of our trips will receive a dues waiver their first year making their first year membership "free". Such a deal! Note, if you pay your dues online, you still need to complete a paper membership application and sign our waiver. If you are unable to attend one of our meetings membership applications can be downloaded from the website and sent to the address listed on the application.



Picnic with the Pops...Havana Nights!

LSSC will once again be purchasing two tables at Picnic with the Pops, August 19th in the Meadow at Keeneland. If you are interested, tickets will be \$15 each and available at the August meeting. This year's program is entitled "Havana Nights" and will feature the music of the Emmy-nominated group "Tempo Libre." Members with last names beginning with A-H please bring a meat or other main dish. Members with last names I-P need to bring a desert and members with last names beginning with Q-Z please bring a salad....to share! Please bring a bag chair and your own beverages as well! Join us for a sizzling hot time! Contact Mary Harbour for details and ticket information at mary.harbour@uky.edu.



The Prez Says . . .

Greetings, Lexington Ski & Sports Club members!

Your board has been busy finalizing plans for the 2011-12 ski and snowboard season. This season we are participating in all three OVSC trips: Steamboat (CO), Big Sky (MT) and Garmisch/Partenkirchen (GER). These trips provide the best deals for our membership – better air pricing than we have seen in recent years and the amenities we all enjoy.

To kick off the season, our August 2 membership/sign-up meeting will be another burger cook-out at the Racquet Club Clubhouse grill. (If your dues are paid before or at the meeting, your meal is on LSSC. Guests will pay \$5.) This is always a fun meeting – reconnecting with our ski and snowboard friends and psyching up for the winter relief from the heat.

The board has made some changes to the dues structure. They are \$25 still if paid by the October meeting and then they increase to \$40 through March 31. This is to encourage more timely trip sign ups and help us to budget for the year. Please pass on to your friends who have yet to join LSSC – new members to the club who sign up for a trip will have membership dues waived for the first year of being part of LSSC.

Please remember trip pricing is based on double occupancy rooming and bedding is not guaranteed. While the trip leaders will strive to accommodate bedding and lodging requests, each member signing up with a roommate with whom s/he is willing to share a bed will prevent sore or awkward feelings. As many discovered last season, pricing is based on group rates and the trip cost does increase if we do not have enough participants. Having only selected OVSC trips this season, we will most likely avoid any uplifts for insufficient group numbers. Having selected great destinations, I hope our challenge is getting everyone on the trips!

In addition to trip sign ups tickets to Picnic with the Pops will be available at the August meeting. It's at Keeneland again, which was a great venue last season. We are attending the Friday, August 19 performance and have two tables reserved. It's a Latin theme – hot music for the hot summer.



Jan 28—Feb 4, 2012
\$1,369 (\$957 land only)
24 spaces available

Get your skis and boards ready—We are going to internationally known Ski Town, U.S.A.® With 164 trails, 3,668 vertical feet and nearly 3,000 skiable acres, Steamboat's six peaks are filled with world-class groomed cruisers, bumps, steep, open meadows, legendary trees and Mavericks Superpipe (and Mini-Mav for the novice pipe rider).

Steamboat is located in Medicine Bow/Routt National Forest and is a complete mountain range: **Mount Werner, Sunshine Peak, Storm Peak, Thunderhead Peak, Pioneer Ridge and Christie Peak.** The gladed areas are Steamboat's particular claim to fame, with Champagne Powder® snow in the trees for the most avid powder hounds. In addition to the famed powder, Steamboat is "blue heaven" - with a multitude of blue trails from groomers to glades. Off the slopes, horseback riding, tubing, cross-country skiing, snowshoeing and a dip at Strawberry Park Natural Hot Springs are other activities available at Steamboat.

We are staying at Timber Run Condominiums, which are only 500 yards from the Steamboat gondola. The lodging is two bed/two bath condos with high-speed internet access. The Timber Run amenities include all of the following:

- Private guest shuttle to skiing, shopping, dining & entertainment
- Complimentary morning coffee & doughnuts in clubhouse
 - On-site laundry facilities
- Outdoor heated pool & three outdoor hot tubs
 - Complimentary ski valet & storage

The air package includes air between Lexington and Denver, ground transportation between the airport and lodging, lift tickets and the usual OVSC amenities (welcome reception, après ski party, mountain picnic, racing and reception).


Steamboat.

To sign up or for more information, contact
Trip Leader Catherine Monzingo
camonzingo@yahoo.com (859) 223-8712

Snow Sport Specifics in Brief!!

Germany's top winter sports resort! If you love skiing, carving or freestyle skiing, cross country skiing, snow-boarding, snow shoeing, or winter hiking, then the Garmisch-Partenkirchen area is the right place for you. You will find conditions here that will make your heart beat faster! More than 213 km of trails, the perfect snow from November to May, well prepared slopes and hiking trails ranging from easy to difficult, modern lift facilities, beautiful views and cozy ski huts.

And Garmisch-Partenkirchen has gotten even better since having been chosen as the official venue for the Alpine Skiing World Championship 2011! Not only were the lift facilities modernized, but the famous Kandahar ski slope was reconstructed. Plus there are five downhill runs with artificial snow so that you can enjoy skiing all the way down to 700m.

Staying in Garmisch-Partenkirchen, you will have easy access to great ski areas:

- Classic and Zugspitze areas
- Mittanwald
- Ehrwald
- Berwang/Bichlbach
- Leermos
- Seefeld
- Heiterwang

Pricing is tentatively only \$1,929 for all this! Details and prices on side trips and the extensions to the Innsbruck Ski Safari and to the Romantic Road will be available at the next meeting!

For more information, contact trip leader Janet Jones at 859.420.5016 or jgiones@email.uky.edu

GARMISCH / PARTENKIRCHEN + MUNICH, GERMANY

February 24 – March 3, 2011

First, you'll be overwhelmed by the mountains, nature and the breathtaking panorama. Then, the local people will win you over with their kindness, openness, and honesty. And finally, the unforgettable moments, memories and experiences you'll have in Garmisch-Partenkirchen will stay with you forever. Walk along the streets of the town and explore the alleyways – with every step you'll discover a little more of the variety the area has to offer – historical sites, interesting excursions, art and culture, exciting events and limitless possibilities with sports! Plus, shop, stroll and indulge 365 days a year!

Garmisch-Partenkirchen has a lot to offer – nature, culture, and a lot of heart. It's Germany's #1 location for winter sports, with the Zugspitze – Germany's highest mountain - and the world's most modern ski jump.

A broad selection of special events and gathering spots, from convivial mountain inns, restaurants, and bars entice you out. There is plenty to do in and around Garmisch/Partenkirchen!

End with two days in Munich, exploring a great city!

What's Included ...

- Airfare Lexington – Munich – Lexington
- Ground transportation Munich – Garmisch/Partenkirchen - Munich
- Five nights at four-star Hotel Mecure at the resort
- Breakfast buffet and dinner daily at the resort
- English- speaking guide on the coach
- Two nights at four star Holiday Inn City Centre in Munich
- Breakfast buffet daily at the hotel in Munich
- Use of internet and the wellness / pool / spa facility at both hotels
- Fuel charges / air taxes / local taxes / luggage handling tips
- Local guide assistance
- Many great optional day tours including guided Neuschwanstein Castle and Chiemsee Castle tours and a brewery tour and tasting
- Discounted lift tickets and equipment rental
- Optional pre-trip Ski Safari based in Innsbruck, Austria
- Optional post-trip extension to Germany's Romantic Road



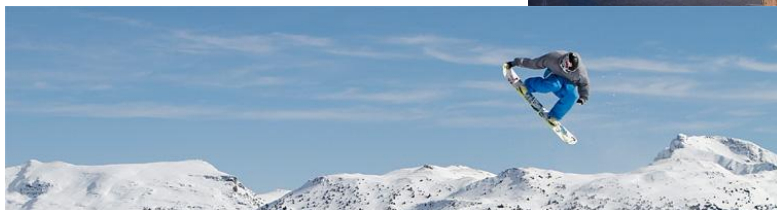
INNSBRUCK SKI OR TOUR – February 20 - 25

Skiers will enjoy an optional Ski Safari with a day each skiing in Kitzbühel, St. Anton, and Innsbruck + a day to choose your favorite or to rest up for Germany or to tour!

Package includes:

- Ground transportation Munich – Innsbruck-Munich
- Four night accommodation at OVSC's favorite, the four star Hotel Grauer Baer, in the Old Town
- Breakfast buffet and dinner daily
- Hospitality desk at hotel
- Local taxes, luggage handling, and tips
- Lift tickets and ski safari transportation extra

Pricing has not been finalized, but will be approximately \$549. (Note: this is only available in conjunction with the Bavaria trip.)



GERMANY'S ROMANTIC ROAD – March 3 - 9

Enjoy touring famous picturesque medieval cities in Germany. The aptly named Romantic Road, or *Romantische Strasse*, is one of Germany's most popular tourist routes. The road stretches for 290km (180 miles) between Würzburg in the north and Füssen in the foothills of the Bavarian Alps. On the way is a series of medieval villages and 2,000-year-old towns, with each town on the road having its special charms and attractions.

Our trip will include:

- Two nights in Rothenburg at the Hotel Eisenhut
- Two nights in Heidelberg at the Hotel Crowne Plaza
- Two nights in Würzburg at the Hotel Maritim
- Guided city tours of Dinkelsbühl, Rothenburg, Coburg, Nuremberg, Heidelberg, Stuttgart, Bamberg, Würzburg
- Guided visits of Heidelberg Castle, Mercedes Benz Museum, Fortress of Coburg, House of Durer
- Breakfast daily
- Tour escort and guide
- Local taxes, guide gratuities, luggage handling

Pricing has not be finalized, pending receipt of contract from the vendor, and will depend on the total number of OVSC participants, the Euro – dollar exchange rate at the time of ticketing, and changes in fuel surcharges. Anticipate a price ranging around \$1,099 (but up to \$1,299 if lower than anticipated OVSC-wide count.)

For more information, contact trip leader Janet Jones at 859.420.5016 or jgjones@email.uky.edu



Big Sky, Montana
March 24-31, 2012
Cost: \$1,349
Land Only: \$834



Package includes:

Round trip airfare from Cincinnati to Billings, MT
7 nights lodging at Big Horn Condominiums
5 day lift ticket at Big Sky Resort
Round trip transfers from Billings to Big Sky
Sunday evening Welcome Reception
Thursday night OVSC Awards Dinner
Mountain picnic
OVSC T-shirt
OVSC trip pin

The Biggest Skiing in America

Big Sky offers instant access some of the most diverse skiing and snowboarding amongst breathtaking vistas in the lower 48. Float down a 2,000 vertical foot, powder filled bowl beneath Lone Peak; bob and weave through the Bavarian Forest; ride the Lone Peak Tram for a bird's eye view of untamed wilderness. You'll find almost twice as many acres as skiers.

Big Sky Mountain

Located 38 miles south of Bozeman (BZN), Big Sky offers three mountains that bear over 85 miles worth of world-class skiing trails. Lone Mountain boasts a shocking 4,350 vertical feet, and is made up of a lot of expert ski terrain. Andesite Mountain is most notably an intermediate mountain, though it also boasts some expert tree runs and a giant half pipe. Flat Iron Mountain offers the greatest variety of them all. In total, Big Sky offers 3,600 wonderful acres of skiing terrain, characterized by 400 annual inches of snow cover, nearly non-existent lift lines and breathtaking scenery.

Big Sky Village

Characterized by its relaxing pace, Big Sky's Mountain Village lies nestled at the base of Lone Peak. Here, you'll find a variety of shops, restaurants, and nightlife for your après ski entertainment. And, when you're not skiing or riding the "cold smoke", Big Sky offers a plethora of winter alternatives like snowmobiling and wildlife viewing in Yellowstone Park, snow-shoeing, sleigh ride dinners, ice skating, free children's activities, and relaxing treatments at the Solace Spa.

Big Horn Condominiums

These units are spacious, well-planned and especially comfortable for groups. Enjoy views of Lake Levinsky and Lone Mountain. Check in at the Summit Hotel. Complex is across the street from Bear Back Poma Lift and under 1/4 mile to Mountain Village Center.





2012 Race Schedule

Perfect North race times, Saturday 10:30 and 1:00, Sunday 10:00 and 11:30.

Paoli Peaks race times, Saturday 10:30 and 1:00, Sunday 9:30 and 11:00

All Mad River races start at 10:00

Race times are tentative. Check in lodge upon arrival.

Race formats (GS, SL, etc.) are subject to conditions and course availability.

<u>Date</u>	<u>Location/Format</u>	<u>Host Club</u>
January 7	Perfect North, IN-two GS	Cincinnati
January 8	Perfect North, IN-GS/SL	Cincinnati
January 21	Paoli Peaks, IN-two GS	Louisville
January 22	Paoli Peaks, IN-GS/SL	Louisville
January 28	Mad River, OH-MR Open Single SL/Dual GS	Columbus
January 29	Mad River, OH-MR Open Figure 11/GS	Columbus
February 4	Perfect North, IN-two GS	Cincinnati
February 5	Perfect North, IN-two GS <i>Mike Robbins Memorial Race additional fee</i>	Cincinnati
February 11	Paoli Peaks, IN-two GS	Lexington/Frankfort
February 12	Perfect North, IN-GS/SL	Lexington/Frankfort
February 18	Mad River, OH-Dual GS	Columbus
February 19	Mad River, OH-GS/SL	Columbus
February 26	Perfect North, IN <i>King/Queen of the Hill</i>	Non-OVSC
March 2-4	WVa Governor's Cup Race	OVSC Weekend Trip Timberline, WVa
March TBA	NASTAR Nationals	Winter Park, CO

Accommodations (request OVSC discount rates, where applicable)

For Perfect North Races: Quality Inn & Suites Airport (NKy), 1-275 Mineola Pike, 859-746-0300

For Paoli Peaks Races: Comfort Inn Suites, French Lick, IN, 812-936-5300; additional options (no special rates)-Lane's Motel, French Lick, IN, 812-936-9919; Big Splash Motel and Water Park, 877-936-3866; and French Lick Springs Resort, 812-936-9360.

For Mad River Mountain Races: Comfort Inn, Marysville, OH, 937-644-0400

For WVa Governor's Cup Races: OVSC Week-End Package; Contact Stephanie Kibbey at smkibbey@sbcglobal.net

2011-12 LSSC Board of Directors

Catherine Monzingo President, camonzingo@yahoo.com
Charlie Lisle – President-Elect, clisle1512@aol.com
Janet Jones– Past President, jgjones@uky.edu
Howard Glauert– Executive VP, hglauert@uky.edu
Dan Geiger– Local VP, dan.geiger@insightbb.com
Janet Jones– Secretary, jgjones@uky.edu
Jon Seaman– Treasurer, jseaman@cecilseaman.com
Mary Harbour– Social, mary.harbour@uky.edu
Jan Clark– Newsletter, janclark@roadrunner.com
Marty Donaldson– Membership, marse50@insightbb.com
Dianna Miller– Publicity/Marketing, hagski@aol.com
Grant Stephens- Webmaster, rgsteph@gmail.com

Lexington Ski & Sports Club, Inc.
P. O. Box 22375
Lexington, KY 40522-2375
www.lexskisports.org