

THE GREAT SCHUSS

LEXINGTON SKI & SPORTS CLUB

December, 2016



Members Meeting

December 6, 2016

The Racquet Club

3900 Crosby Dr.

Lexington, KY

Social time will begin at 6:00 P.M.

Food, beer and wine are available for purchase.

THE MEETING STARTS AT 7:00 P.M.

Holiday Party



DECEMBER BIRTHDAYS

CHARLES LISLE	15 - DEC
DIANNA MILLER	1- DEC
MARK MILLER	21- DEC
ROBIN GEIGER	24- DEC
MARIANNA DAVIS	29 - DEC
JESSE SISKEN	7 - DEC

2017 SKI SEASON!!

News from the Executive Vice President

The Western and International trips for the 2017 ski season have now been set by the board of the LSSC. The trips and dates are as follows:

Big Sky, Montana: Jan. 22-29, 2017

Park City, Utah: Feb. 25 - March 4, 2017

Engelberg, Switzerland: March 18-28, 2017

See trip fliers below for more information.



BIG SKY, MONTANA

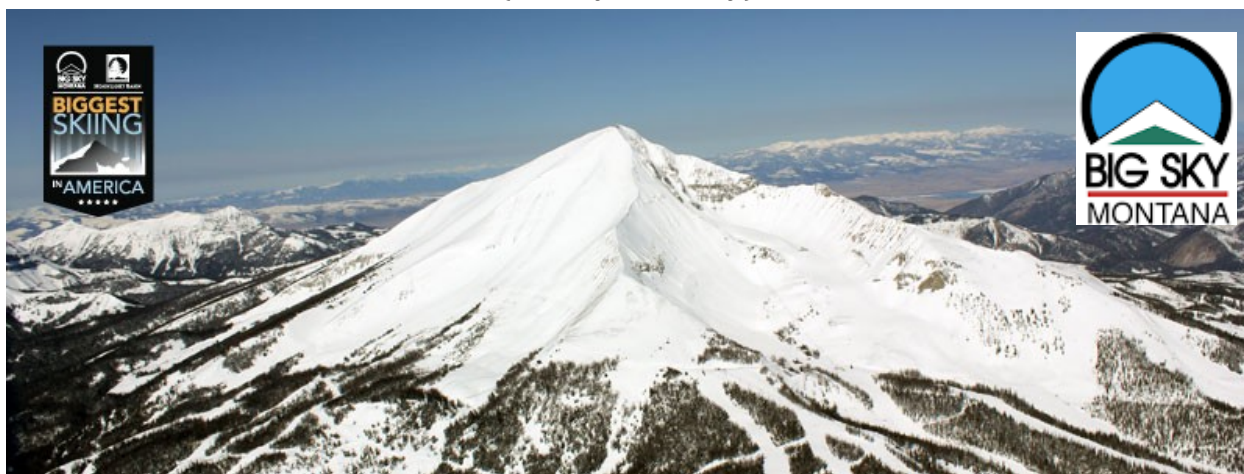


PARK CITY, UTAH

OVSC/LSSC Trip to Big Sky

Jan. 22-29, 2017

(Sunday—Sunday)



The **Biggest Skiing in America** is the sensation of endless terrain under an expansive big sky where guests come to leave crowds and traffic behind, lapping ski runs with hardly a wait. Big Sky Resort is big with four mountains connected by chair lifts providing families and friends of different skiing abilities a magnitude of intertwined terrain levels, notably the desired steeps the Lone Peak Tram accesses. Powder stashes are continually found throughout Big Sky due to the consistent snowfall in the Northern Rockies with a natural fall-line back to the village base. Acres trump skiers boasting about two acres per skier as they disburse over the inbound landscape.

Elevation

Summit (Lone Peak) - 11,166 feet
Base (Mountain Village) - 7,500 feet

Ski Terrain

5,800 acres
300 named runs on 4 connected mountains.

Vertical Drop

4,350 feet

Lifts

Chair Lifts: 23
Surface Lifts: 11

Longest Run

Liberty Bowl to Mountain Mall: 6 miles

Average Lift Line

Consistently recognized in national ski magazines for short or non-existent lines.

Average Winter Daytime Temperature

25° F

Average Annual Snowfall

400+ inches

(from bigskyresort.com)

Payment Schedule

	Payments via Check	Payments via Paypal
August	\$100	\$100
September	\$435	\$450
October	\$435	\$450
November	\$435	\$450
December	\$334	\$339
Total Cost	\$1,739	\$1,789

Package includes:

- RT Airfare between Lexington, KY and Bozeman, MT on United Airlines
- Ground transfers
- 7 nights lodging at the Big Horn Condominiums
 - 3 Bedroom/3 Bath units, 6 per unit
- 5 day lift ticket
- OVSC goodies
 - Welcome party
 - Race
 - Mountain Lunch
 - Poker Run
 - Awards Dinner

For more information contact: Ray Clark, rayclark138@aol.com, 859-552-5920

PARK CITY, UTAH

LSSC

February 25 – March 4, 2017



America's Largest Single Ski And Snowboard Resort

Located in the heart of Park City, only a 35-minute drive from Salt Lake City International Airport. During summer 2015, the Resort undertook the largest resort improvement project in the history of American skiing, one that linked it with neighbor Canyons Resort to create the United States' largest ski area. Park City is an easily accessible, world-class mountain destination located in an authentic & historic western town.

www.parkcitymountain.com

- ✓ Over 7,300 acres of skiable terrain and a good mix of beginner, intermediate and advanced terrain.
- ✓ 300+ trails, 38 lifts, seven terrain parks, 14 bowls, six natural half pipes, one super pipe and one mini pipe.

TRIP INCLUDES

Air Transportation

Non-stop flights on Delta Cincinnati to Salt Lake City

Ground Transportation:

Le Bus: Round trip ground transportation to and from the airport on a chartered 28 passenger bus.

Le Bus: Round trip ground transportation to/from Snowbird for a day of skiing.

Lift Tickets

Park City Canyons	3 of 5 days
Deer Valley	1 day lift ticket
Snowbird	1 day lift ticket & transportation to Snowbird

Lodging

Park Avenue Condominiums
7 NIGHTS

Conveniently located on Park City's free city-wide transportation route—1/2 mile to the lifts and within walking distance to many restaurants, shops and grocery stores.

TRIP COST:

PAYMENT VIA CHECK \$1729.00

PAYMENT VIA PAYPAL \$1779.00

Payment Schedule

August	\$100.00
September	\$340.00
October	\$340.00
November	\$340.00
December	\$340.00
January	\$269.00

Payment Schedule

August	\$100.00
September	\$350.00
October	\$350.00
November	\$350.00
December	\$350.00
January	\$279.00

Contact: Jan Clark, jclark@icj-ky.org

Snow Sport Specifics in Brief!!

Four ski areas make up the Engelberg resort...

Titlis Area-

2000 meters of altitude difference of slopes and trails, great snow conditions well into spring, breathtaking Alpine surroundings: three aspects that make the Engelberg-Titlis Ski Area the special place it is.

It's one of the largest ski areas in Central Switzerland with no less than 25 lifts and means of uphill transport. Boasting 82 km of slopes, the Engelberg-TITLIS ski area offers plenty of variety. The total route length for downhill skiing and snowboarding is 82 kilometres. The incline length (downhill route) is 55 kilometres. Within the system of 82 km of slopes, there are downhill runs for the 'pros' as well as 3 slopes for beginners. Glacial slopes at 3'000 m above sea level make skiing possible from October till May - there's always snow!

Outdoor sports + fresh air = hunger: There are plenty of restaurants to choose from to take care of that!

Italian pasta, French fries or classic Swiss 'Älplermagronen' - or whatever dish it takes to recharge winter athletes so that they're ready to hit the slopes again for more thrilling downhill runs.

A tip: the downhill run to the valley is the longest stretch - covering a distance of 12 km with an altitude difference of 2'000 m. What a perfect way to wrap up a day on the slopes! There are red, blue, black, and yellow slopes. Beginners and professional - nobody gets bored here!

Brunni - the Sunny Side of Engelberg

Enjoy 7 kilometers of well-prepared trails and the sunniest slopes for skiing and snowboarding in Central Switzerland on the brunni. Psst! A little secret: black-marker Schonegg-Piste offers one of the prettiest views of the mountains surrounding Engelberg

The Bannalp Area is the jewel in the crown of the canton of Nidwalden. With its unspoiled nature, snowy landscapes, fresh mountain air, this is the perfect >>>>

ENGELBERG, SWITZERLAND

March 18 - 28, 2017

Engelberg is, according to a recent cover story in Powder Magazine, is Switzerland's best kept secret! Now the largest ski resort in Central Switzerland, Engelberg has plenty of slopes for both experienced and inexperienced skiers and snowboarders, as well as a wide range of off-piste attractions.

Formerly quiet monastery village, Engelberg became a modern winter sports center with international guests. If you go skiing in Engelberg, you will find a variety of different slopes between Brunni and Jochpass. The old mountain village is the largest family winter sports resort in Central Switzerland. Some 2,000 m in altitude and 12 km on foot separate the peak of the Titlis from the valley below. Many lifts serve the snowy pistes, offering numerous descents of varying difficulty for skiers, snowboarders and telemarkers. The ski resort Engelberg also includes a terrain park with halfpipe.

What's Included ...

- Airfare Lexington - Zurich - Lexington on Delta Airlines
- Ground transportation Zurich - Engelberg - Zurich
- English-speaking guide on the bus
- Seven nights at the three-star Hotel Terrace at the resort
- Daily breakfast buffet at the hotel with hot and cold options
- Dinner nightly at the hotel (three-course meal with included wine and/or beer) - choice of two restaurants
- Welcome wine and cheese reception with resort orientation
- Use of wellness / spa facility with sauna, steam room and relaxation area at the hotel
- Free WiFi
- Local guide assistance
- Fuel charges / air taxes / local taxes / luggage handling tips
- Many optional day tours
- Six day lift ticket (\$327 value)
- Daily ski guide (\$600+ value)
- Two nights in Zurich at the four star Holiday Inn Zurich Messe Hotel
- Breakfast buffet daily in Zurich



For more information, contact trip leader Janet Jones at 859.420.5016 or jjones@uky.edu

place to wind down and replenish your energy. The Bannalp has two family-friendly ski lifts for gentle skiing and snowboarding descents. The six blue and one red slope ensure skiing fun for all ages.

The Gerschnialp Area boasts enchanting mountain panoramas and excellent skiing conditions for families and beginners. The Gerschnialp offers the perfect conditions for beginners to master their skiing or snowboarding technique and have plenty of fun in the process. The beginners' area is 1,300 metres above sea level, so there will still be enough snow at Easter for attempting initial descents and working on technique.

Details.....

Just some of the Winter Activities available.....

- Ski and Snowboard
- Ice skating and curling
- Heli-skiing and boarding
- Ice Climbing
- Cross-country skiing
- Paragliding and hang-gliding
- Sledding
- Ski Mountaineering
- Excursions and Snowshoeing
- Swimming
- Snow tubing
- Snowshoeing
- Winter hiking

Engelberg Ski Area

- 9908 ft Summit
- 6436 ft Vertical
- 3444 Resort Altitude

Features of Engelberg Area

- 51 miles of pistes (33% intermediate, 57% advanced, 10 expert)
- 1 terrain parks
- 82 acres of skiable terrain
- 21 miles of snowmaking
- night skiing
- longest run 7 miles
- 22 lifts and cable cars

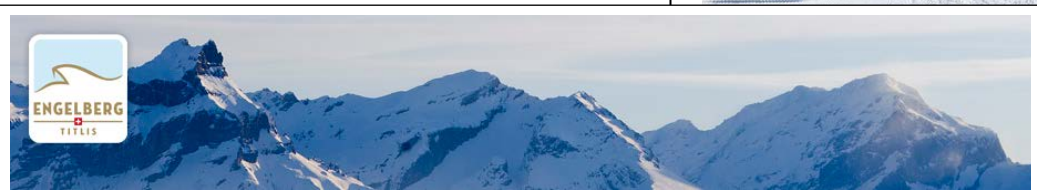
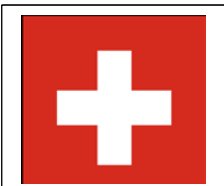
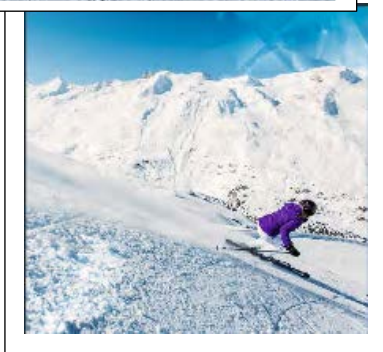
Four ski areas....

- Titlis
- Brunnli
- Bannako
- Gerschnialp

Pricing is only \$2,599 for all this!
Remember that pricing is not final until ticketing due to fluctuations in currency rates and airline surcharges/taxes.

Payment Schedule (by check)

October	\$650
November	\$650
December	\$650
January	\$649



Pristine powder snow slopes, bizarre rock formations, snow-topped peaks, mighty glacier snouts, seclusion. This picture-book winter wonderland is truly incredible. The highest peaks seem to be so close. Only a few more steps and you reach the top: soon you will enjoy your personal first line on untouched powder or corn snow slopes. Passionate ski mountaineers – and all those who want to try it in the future – can indulge to the full in the magic high Alpine winter world of Central Switzerland. There are some of the finest "hautes routes" in the Eastern Alps. A state of the art snowmaking system guarantees that the slope is completely prepared and groomed.



KETTLER
 © Engelberg-Titlis Tourismus
 6390 Engelberg

- | | | | | | | |
|--|--|---|---|--|---|---|
| <ul style="list-style-type: none"> — Abfahrt leicht
Downhill run/easy — Abfahrt mittel
Downhill run/intermediate — Abfahrt schwierig
Downhill run/difficult — Abfahrtsroute sehr schwierig
Downhill route very difficult | <ul style="list-style-type: none"> Langlaufloipen
Cross-country skiing Winterwandweg
Winter hiking trail Schneeschuhwandern
Snowshoeing Schlittelbahn
Sledding | <ul style="list-style-type: none"> Luftseilbahn
Aerial cable car Sessellift
Chairlift Standsesselbahn
Funicular Skilift
T-Bar lift Förderband für Anfänger
Magic carpet for beginners | <ul style="list-style-type: none"> Beschneite Piste
Artificial snow Kinderangebot
Kids Special SOS-Station
Emergency/Rescue
Phone 041 639 50 61 | <ul style="list-style-type: none"> Bergrestaurant
Mountain restaurant Webcam
Webcam Gletschirm-Start
Paragliding Rodelbahn
Tobogganing Tennis
Tennis | <ul style="list-style-type: none"> Tubing
Tubing Terrainpark
Terrainpark Eislaufen
Ice skating Curling
Curling Hallenbad
Indoor swimming pool | <ul style="list-style-type: none"> Sauna
Sauna Igludorf
Igloo village Wild-/Wald- und Schutzzone
Wildlife and Forest Protection Areas |
|--|--|---|---|--|---|---|

SAVE THE DATE



PERFECT NORTH SKI TRIP(S)!!

JANUARY 7 OR 8, 2017

JOIN THE LSSC FOR A DAY OF SKIING AT PERFECT NORTH!!

FEBRUARY 4, 2017

THE LEXINGTON SKI AND SPORTS CLUB (LSSC) AND THE BLUEGRASS CYCLING CLUB (BCC) ARE JOINTLY HOSTING A DAY AT PERFECT NORTH!! AN OVERNIGHT OPTION WILL BE AVAILABLE—MORE DETAILS LATER.

Watch the upcoming newsletters as well as the club's Facebook and meetup.com pages for trip details!

SKI RACING 2017



RACING SEASON IS HERE!

If you want to race or ever thought about racing, now is the time to join the LSSC Race Team! We will begin in January and race most weekends until the beginning of March. You do not have to be there every weekend, but you do need to be on the roster.

Venues are: Perfect North Slopes
Paoli Peaks
Mad River Mountain

You could even qualify for the NASTAR NATIONAL CHAMPIONSHIP
in March!

DIANNA MILLER

hagski@aol.com

[859-749-2651](tel:859-749-2651) (text accepted)

ALL DATES LISTED ARE CONFIRMED

2017 OVSC Race Schedule

Perfect North race times, Saturday 10AM, Sunday 10AM

Paoli Peaks race times, Saturday 10:00AM, Sunday 9:30AM

All Mad River TBD , Snow Trails 9AM

Race times are tentative. Check in lodge upon arrival.

Date	Location/Format Host Club
January 7	Mad River, OH - GS,GS Columbus
January 8	Mad River, OH - SL GS
January 14	MLK Weekend
January 15	
January 21	Paoli Peaks IN - two GS
January 22	Paoli Peaks IN - two GS
January 28	Mad River, OH – MR OPEN Start 10AM Columbus
January 29	Mad River, OH – MR OPEN Figure 11, GS Start 9AM
February 4	No racing
February 5	Perfect North Slopes, IN – KING OF THE HILL All 4 race formats, 1 run each
February 11	Paoli Peaks IN - two GS
February 12	Paoli Peaks IN - two GS
February 18	Presidents Weekend
February 19	
February 25	Perfect North Slopes, IN – Super NASTAR Cincinnati
February 26	Perfect North Slopes, IN - Super NASTAR
March 3-4	West Virginia Governors Cup Race

Race formats (GS, SL, etc.) are subject to conditions and course availability

SOCIAL



HOLIDAY PARTY

DECEMBER 6, 2016

THE RACQUET CLUB

BOARD NOTES



The next board meeting will be held December 14, 2016. Members may attend any meeting of the board by notifying any board member in advance. Contact a board member for the meeting location if you would like to attend.

LSSC Officers and Directors 2016-17

PRESIDENT - JANET GRAHAM JONES

jjones@uky.edu

PAST PRESIDENT - LINDA GORMAN

lsgorm0@uky.edu

SECRETARY- DALE WHITE

dale@lexinvest.com

EXEC VP-HOWARD GLAUERT

hglauert@uky.edu

TREASURER-CHARLIE LISLE

clisle1512@aol.com

SOCIAL – LINDA GORMAN

lsgorm0@uky.edu

MEMBERSHIP-CECILE MCKINNEY

cilkyus@yahoo.com

WEB MASTER-DAVID MORRISON

davidaaronmorrison@gmail.com

NEWSLETTER- ANNETTE RIEHLE

asr817@windstream.net

RACING-DIANNA MILLER

hagski@aol.com

PRESIDENT-ELECT- DAN GEIGER

dangeiger17@gmail.com



LSSC website: www.lexskisports.org