

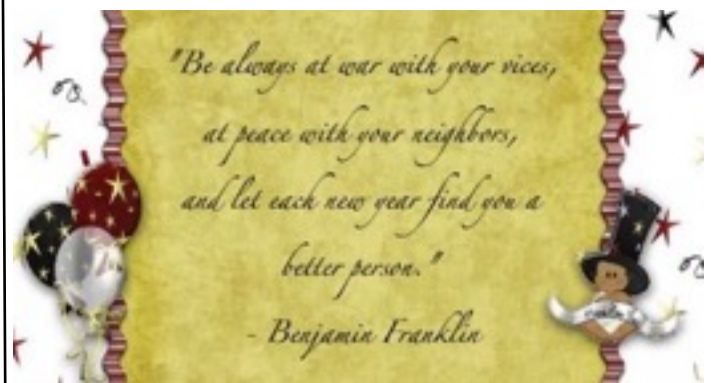
THE GREAT SCHUSS

LEXINGTON SKI & SPORTS CLUB/JANUARY 2015/JAN CLARK, EDITOR

January Meeting:
January 6th
FINALLY!
It's Ski Season!

It's finally ski season and our first meeting of 2015 will focus on something very important to all of us: keeping our skis in great shape so they will serve us well! Dr. Mark Miller will do a workshop on how to tune your own skis. Even if you don't want to do your own tuning it will provide you the information you need to keep the regular ski-tuners on their toes! Arrive at 6:00 pm to enjoy Social Hour. The program and meeting will begin at 7:00 pm. We are meeting at the Racquet Club Apartments Clubhouse!

Trip payments and dues applications will be taken during the social hour. **REMEMBER:** You must be a paid member of LSSC (or another OVSC Club) to participate on ski trips. If you have not renewed your membership you won't be getting on the plane!



January Social

Jan 16th @ 6:00 pm

Harry's Bar @ Malone's, Palomar



LSSC Officers and Directors 2014-15



The January board meeting will be **WEDNESDAY, January 14th** at 6:30 pm, The meeting will be held at 1880 Ft. Harrods Drive. Turn into Rabbit Run Subdivision at the Harrodsburg Road/Ft. Harrods traffic light between New Circle and Man-O-War. 1880 is at the end of the dead end on Fort Harrods Drive. Members may attend meetings of the board by notifying any board member in advance.



January Birthdays

- Art Schlacter - Jan. 8
- Janet Jones - Jan. 11
- Ed Murphy - Jan. 11

- PRESIDENT-JANET GRAHAM JONES
jjones@uky.edu
- PAST PRES/SECRETARY-DAN GEIGER
dangeiger17@gmail.com
- PRESIDENT-ELECT-LINDA GORMAN
lsgor0@uky.edu
- EXEC VP-HOWARD GLAUERT
hglauert@uky.edu
- TREASURER-CHARLIE LISLE
clisle1512@aol.com
- SOCIAL-SI MORRISON
sraftery@gmail.com
- MEMBERSHIP-CECILE MCKINNEY
cilkyus@yahoo.com
- TECH GURU-DAVID MORRISON
davidaaronmorrison@gmail.com
- NEWSLETTER-JAN CLARK
janclark@roadrunner.com
- RACING-DIANNA MILLER
hagski@aol.com



Mark your
Calendar NOW for
Feb. 14th . . .
My annual
SOUP PARTY!



LSSC website:
www.lexskisports.org

**Whistler Blackcomb,
British Columbia
January 24-31, 2015
Trip Cost: \$1,430**

Nothing short of “massive” could be used to describe Whistler Blackcomb! With over 7,000 acres of terrain, it is hands-down the largest resort on the NA continent. And, thanks to a favorable Canadian exchange rate, you can enjoy this awesome, action-packed, fun-filled ski destination for a more-than-reasonable rate.

Lodging: Tantalus Lodge

We will be staying in The Tantalus Lodge, which offers twenty-four hour hospitality, guest services & housekeeping daily, to help you make the most of your time in Whistler. Conveniently located near the heart of Whistler Village, you are no more than a 5 minute walk away from world-class dining, trendy shops and spas, golf and of course skiing, snowboarding, biking and hiking on Whistler Blackcomb. Two separate bedrooms with a queen bed in one and two twins in the second bedroom. Two full baths, living room, dining room, balcony and fireplace.



Trip Includes:

- Roundtrip airfare between Lexington and Vancouver, British Columbia
- Roundtrip airport/lodging transfers from Vancouver International to Whistler.
- 7 nights lodging at the Tantalus Lodge
- Five of six day adult lift ticket to Whistler Blackcomb
- Welcome Reception – Sunday evening

Trip Leader:

John Sampson
E-mail: lextrane@yahoo.com

Air:

Lexington to Vancouver, BC

Payment Schedule:

Click here to pay your deposit: <http://www.lexskisports.org/2015-whistler-trip>

August \$100
September \$400
October \$400
November \$400
December \$130



Whistler & Blackcomb Mountains

Located approximately 72 miles north of Vancouver, Whistler Blackcomb boasts two enormous mountains and a whopping 7,071 acres of ski terrain. Each of these mountains offers a drop of nearly one vertical mile, and more than 200 amazing trails span their combined slopes. This is the only place in North America where you can ski on a glacier and there are **three** to choose from! Thirty lifts compose one of the most advanced systems in the industry, allowing you explore this ski resort more efficiently. And despite the low base altitude, Whistler receives an excess of 30 annual feet of snow so you will breathe easier while tackling a mountain of amazing powder.



Whistler Village

Modeled after a European ski community, Whistler ranks as one of the finest ski towns on the continent. From candle-lit bistros to pulse-pounding clubs to world-class shopping, Whistler Village has it. The village was designed to be centralized around the mountain, so as a result, most everything is at least walking distance to the ski slopes and the resort center. And no matter what you decide to do, the infamously friendly Canadian hospitality will be there to greet you.

KEYSTONE, CO



Feb. 7-14, 2015
\$1,095

SOLD OUT

If interested, contact Trip Leader for possible add-on.

Three huge mountains!
Long runs all levels
Night skiing
Tree skiing
Bowl skiing
Snowcat tours

BONUS! Trip coincides with the final week of the FIS 2015 World Championships at Vail and Beaver Creek. Use your Lift ticket and see the worlds top skiers as well!



Evergreen Condominiums: 2 bedroom, 2 bath units; Shuttle to Mountain House and River Run; Hot tub and indoor pool.

Multiple Mountains: 5-day interchangeable lift ticket; valid everyday at Keystone and A-Basin; Valid 2 of 5 days at Vail, Beaver Creek and Breckenridge.

Air: United, Lexington - Denver

Trip Leader: Charlie Lisle, clisle1512@aol.com

Payments: Aug. \$100; Sept. \$275; Oct. \$275; Nov. \$275; Dec. \$170. To make your deposit payment, click here: <http://lexskisports.org/2015-keystone-trip>



Dercum Mountain
(Front Side)



The North Peak



The Outback

Trip Leader:
Catherine Monzingo



- E-mail: camonzingo@yahoo.com
- Lodging: Teton Village
- Location: Close to lifts
- Apres Ski: Mangy Moose
- Bus Service: To town for shopping, dining and more skiing
- Optional Activities: Dog.-sledding, galleries, snowmobiling, shopping, & more!
- Payment Schedule: Aug.-\$100; Sept-\$250; Oct-\$250; N.ov-\$250; Dec-\$250; Jan-\$250. Click here to pay your deposit: <http://www.lexskisports.org/2015-jackson-hole-trip>

Jackson Hole, WY-Feb. 21-28



DETAILS

Land Only

\$1320

Availability

18

Lift Tickets

**5
days**

OVSC PERKS

Special Package

Welcome Reception

NASTAR Race

Mountain Picnic

Snow Sport Specifics in Brief!!

Miles of interconnecting ski runs - some of the best in the Dolomites - are linked by the cable cars and lifts of Funivie Madonna di Campiglio. Advanced skiers will like the extremely difficult terrain found on certain mountain faces, but there are also many inter-mediate and beginner runs, all accessible from town. There are also plenty of off-piste opportunities.

Campiglio is also part of the greater Skirama Dolomiti Adamello-Brenta area, giving visitors access to eight Alpine ski resorts and over 200 miles of slopes. Spinale ski lifts are located just a few hundred meters from the OVSC Hotel Relais des Alpes (5 minute walk). Heli-skiing is also available.

Madonna di Campiglio was one of the first winter resorts to believe in the future of snow-boarding and to invest in facilities, playing host to the most prestigious international meetings in Trentino.

Madonna has a reputation for its après ski that rivals that for its actual skiing. 'People Watching' begins as soon as the lifts close and many of the resort's more wealthy clientele appear togged up to the nines already to parade in fur coats with dogs that seem smaller than any canine species previously known to mankind.

Pricing is only \$2,657 for all this!
Pricing is not final until ticketing due to fluctuations in currency rates and airline surcharges/taxes.

For more information, contact trip leader Janet Jones at 859.420.5016 or jjones@uky.edu.

MADONNA DI CAMPIGLIO, ITALY

March 7 – 16, 2015



Madonna di Campiglio is an elegant ski resort located at 1550 m of altitude in a natural conch nestled between the **Brenta Dolomites** mountain range and the **Adamello** and **Presanella** glaciers. Today it's one of the most important and well-known Italian ski resorts in the Alps. Its favorable position and mountain atmosphere guarantee optimal ski conditions on slopes that wind from the center of town up to a height of 2600 meters, slopes that cater to all ability levels. The resort boasts 57 ski lifts and 380 km of slopes, 50,000 square meters of snowpark, 40 km of cross country ski trails with four rings at Passo Campo Carlo Magno, and a direct connection to the slopes of **Pinzolo** (which is already connected with Folgarida and Marilleva).

Madonna di Campiglio is known for its social scene, but you don't need to go far to immerse yourself in a panorama of lakes, valleys, streams, shepherd's huts and refuges. The 50,000 hectares of the **Adamello-Brenta Natural Park** and the 450km of mountain trails offer breathtaking views for those who hike or snowshoe through the shade of the indigenous larch and fir tree forests.

What's Included ...

- Airfare Lexington – Milan – Lexington on Delta Airlines
- Ground transportation Milan – Madonna - Milan
- English- speaking guide on the bus
- Seven nights at the four-star Hotel Relais Des Alpes at the resort
- Hot and cold breakfast buffet daily at the hotel
- Six nights dinner at the hotel with choice of traditional and international dishes
- Dinner with wine at the Mountain Rifugio including round trip transfer by snowcat
- Welcome wine and cheese reception with resort orientation
- Use of wellness / spa facility at the hotel
- One night at four star ATA Executive Hotel in Milan
- Breakfast at the hotel
- Fuel charges / air taxes / local taxes / luggage handling tips
- Local guide assistance
- Many optional day tours
- Optional post-trip extension to Ireland and Scotland
- Optional pre-trip extension to Cortina d'Ampezzo



Details



Just some of the Winter Activities available.....

- Ski and Snowboard
- Ice skating
- Heli-skiing and boarding
- Ice Climbing
- Cross-country skiing
- Nordic walking
- Paragliding and hang-gliding
- Dog sledding
- Ski Mountaineering
- Excursions and Snowshoeing
- Swimming
- Snow tubing
- Winter hiking

Madonna Ski Area

- 3630 ft Max Vertical
- 8580 ft Highest Lift
- 5115 Resort Altitude
- 4950 Lowest Piste

Features of Dolomiti Adamello-Brenta Ski Area

- 380 km (200+ miles) of pistes
- 1 skipass
- 100 slopes (45 blue, 37 red, 18 black)
- 5 snowboard parks
- 61 lifts
- 95% programmed snow

Highlights

DoloMitica Run: the longest and greatest descent (5,750m long, with a total slope of 1,248m)

DoloMitica Run: steepest downhill with a maximum slope over 70%

Schumacher Streif: the last part of Spinale Direttissima ski run, with a maximum slope of 70%

Ursus Snow Park: one of the top 5 snowboard park in the Alps

Pinzolo-Campiglio Express: the gondola lift with the best panoramic view

Canalone Miramonti: night skiing

Dolomiti Express: a "train in the Dolomites" to reach the ski lifts of Val di Sole, and therefore Madonna di Campiglio and Pinzolo

Of Special Interest – TOP Piste in Madonna - 3Tre – Canalone Miramonti

One of the most famous slopes in the entire world, where Alberto Tomba and Giorgio Rocca scored some of their greatest successes. Approximately 2.700 meters long, a winding track with numerous extremely fun and dynamic curves. After skiing down through the sparse trees of the first part of the slope which has a medium difficulty level, but allows you to admire a magnificent view of the Brenta Dolomites, skiers will enter into the Canalone Miramonti, the most technical and difficult part of the slope. The finish area of the slope is located within the town of Madonna di Campiglio: an additional bonus for those that decide to try the thrill and excitement that this slope provides. A maximum gradient of 40%, for a slope that is a skiing legend. A state of the art snowmaking system guarantees that the slope is completely prepared and groomed.

MADONNA DI CAMPIGLIO SIGHTSEEING EXCURSIONS

Actual Days of Operation to Be Scheduled



FULL DAY TOUR TO TRENTO

Leave your hotel in Madonna di Campiglio at 09.00am and board the coach for your excursion to Trento (approximately 2 hours of driving, according to road conditions).

Upon arrival, meet the local guide and start your visit of the city. Trento is set in a wide glacial valley, surrounded by vineyards and apple orchards. This city had a very important role in the Medieval Ages, as you may have heard about Council of Trent, one of the most important events of the history of the Church...Walk along the streets and have a view of Piazza del Duomo, so that you can experience the Medieval taste of the city, but at the same time do not forget about having a piece of famous apple strudel!

After some free time for lunch, enjoy a visit of Buonconsiglio Castle, once the property of Principi Vescovi Castle and nowadays one of the most fascinating examples of this kind of architecture in northern Italy.

Later board the bus for a visit to a winery including wine tasting and some snacks.
Return to the hotel at about 6 PM



FULL DAY TOUR TO THUN CASTLE AND ST. ROMEDIO

Leave your hotel in Madonna di Campiglio at 09.00am and board the coach for an excursion to Thun (approximately 1.5 hours of driving, according to road conditions).

Thun Castle is situated on a strategic spot which offers a wonderful view of Val di Non . The Castle was the house of one of the most important feudal families in Northern Italy, while now it is property of Trento Province.

After your visit, have some free time for lunch and then transfer (approximately 45 minutes driving) to St. Romedio Sanctuary. This is one of most characteristic examples of Christian faith in Europe. It is built on a 70-metre high calcareous rock.. This architectonic building is surrounded by a wonderful natural landscape and it is composed of several churches and chapels directly on the rock. The whole structure is connected by a steep stairway with 131 steps. The oldest chapel of the building dates back to the 11th century and over the centuries other three little churches and other two chapels have been built.

At 4.00pm you will board your coach and transfer back to your hotel.



FULL DAY TOUR TO SAN MICHELE ALL'ADIGE

Leave your hotel in Madonna di Campiglio at 09.00am and board the coach for your excursion to Mezzacorona and San Michele all'Adige(approximately 1.5/2 hours of driving, according to road conditions). Upon your arrival in San Michele all'Adige there will be some free time to visit the town on your own and to find a nice café for lunch. San Michele is famous for its tradition, and you could spend some free time to visit the Museum of Uses and Customs of Trentino People. (entrance fee is not included).

After lunch meet the guide and board the bus for a transfer to a winery for wine tasting.

At 4.00pm maximum board your coach again and transfer back to your hotel

To pay a deposit for the Europe trip online, use the link below:

<http://www.lexskisports.org/2015-international-trip>



THE HOTEL



Great central location

Wellness area with heated pool and two hot tubs

Bar with piano bar

Large relaxing lobby lounge

Just 200 yards from the lifts

Shuttle accessible

Full service spa

Wireless internet in public areas

Onsite restaurant

Minibar and safe in each room

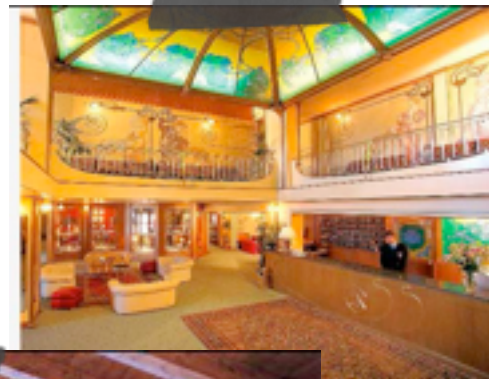
In-room internet for surcharge

LCD TVs in each room

103 guest rooms



The Hotel Relais des Alpes





Cortina, Italy!!!

February 28 – March 8

If a week in Madonna di Campiglio is not enough mountain for you, on February 28 – March 8 LSSC will be joining other OVSC skiers and travelers in one of our favorite European destinations!! We will be going to **Cortina** for seven nights at the four-star Concordia Parc Hotel before heading to Madonna di Campiglio.

Located in the heart of the Dolomites in an alpine valley, it is a popular winter sport resort known for its ski-ranges, scenery, accommodations, shops, and apres ski. Guaranteed snow cover on 95% of the slopes combined with eight hours of daily sunshine produce sublime skiing conditions at one of the world's premier ski resorts. Surrounded on all sides by the breathtaking Alps, ski resorts at Cortina encompass the very best that world-class skiing, entertainment, and shopping have to offer. On a break from skiing or simply done with the mountains for the day? The Corso Italia, a pedestrian paradise lined with quaint boutiques and exquisite restaurants, is the crown jewel of an environment swelling with allure and flavor that only Cortina can produce.

Cortina d'Ampezzo has been a winter sports mecca since the 1930's, and in 1956 it hosted the first Italian **Winter Olympic Games**. It is known as the Queen of the Dolomites and is located in the heart of the eastern part of these spectacular mountains, in the Belluno province of the Veneto region. The area, open and sunny, boasts stunning views in every direction. One of the best-known ski resorts in the world, Cortina lives up to its reputation with a system of modern ski lifts and snowmaking capabilities that cover 90% of the slopes and which guarantee a ski season that stretches from November to April. The resort, with nearly 140 km of slopes, includes **Auronzo-Misurina** and **San Vito di Cadore** and is part of the **Dolomiti Superski** ski area. Cortina also has a rich tradition of hospitality and events. Every year it hosts international sports events like the **Alpine Ski World Cup**, the **Tour de Ski**, ice hockey and curling championships, and **Cortina Winter Polo**.

This package includes:

- airfare on Delta Airlines into Venice
- ground transportation on private luxury motor coach between Cortina and Venice with English-speaking guide
- seven nights lodging at the hotel
- breakfast and dinner daily
- tips and/gratuities for luggage handling
- transfer to Cortina by bus
- fuel surcharges, departures taxes, local taxes

Total cost for this great trip will be about **\$1,278**. Note that the price may change due to fluctuations in currency exchange rate and/or airline surcharges/fuel taxes.

Ireland & Scotland with LSSC and OVSC

March 16-26, 2015

Tour all the main areas of interest in Ireland and Scotland with your LSSC and OVSC friends in March. A busy itinerary is planned to see all the sights – even St. Patrick's Day in Limerick!

What's Included ...

- Air between Milan and Dublin on Aer Lingus
- Transfer between Dublin Airport and Limerick in private motor-coach with Driver/guide

- Stop at the **National Gardens** en route to **Limerick**
- 4 nights accommodations in Limerick at the 4 star **George Boutique Hotel** in city center

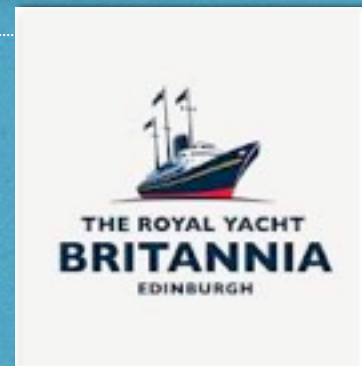
- Breakfast buffet daily at the George
- Half-day city tour of **Limerick** with guide
- Entrance to **St. John's Castle**
- Full day tour to **Killarney** and **Ring of Kerry**
- **Medieval banquet** at **Bunratty Castle** including transfers
- **St. Patrick's Day activities in Limerick.**
- Full day tour to the **Cliffs of Moher**
- Transfer between Limerick and Dublin
- Visits of **Kilkenny** and the **Rock of Cashel** during the transfer to Dublin.
- 3 nights accommodations in **Dublin** at the **Gibson Hotel**
- Breakfast buffet daily at the hotel
- Half-day city tour of **Dublin** including **St. Patrick's Cathedral** and **Trinity College**

- Full day tour from Dublin to **Boyne Valley** with visits to the **Bru na Boinne Visitors Center** and **Trim Castle**

- Transfer between Dublin Hotel and Airport for flight to Edinburgh.
- Air between Dublin and Edinburgh on Aer Lingus
- Transfer between Edinburgh Airport and hotel in private coach with guide
- Full day tour of **Edinburgh** including entrance **Edinburgh Castle** and visit to **Royal Yacht Britannia**

- Three nights accommodations in Edinburgh at the 4 star **Novotel City Center Hotel**

- Breakfast buffet daily at the hotel
- All local taxes
- United Kingdom Departure tax
- Luggage handling tips



FROM THE TRIP LEADER:

Pricing is only \$2,075 for all this when booked with the Madonna trip! Remember that pricing is not final until ticketing due to fluctuations in currency rates and airline surcharges/taxes. Ireland/Scotland only available. For more information, contact trip leader Janet Jones at 859.420.5016 or jjones@uky.edu.

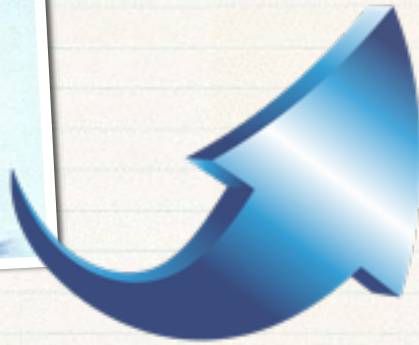


OVSC Racing 2015



Dianna Miller, Race Dir.

...



JOIN YOUR OVSC SKI BUDS IN WEEK-END FUN! RACE!

CONTACT Dianna Miller, LSSC Race Director at
hagski@aol.com for details and to sign up for the fun!

1/3-4	Mad River
1/10-11	Snow Trails
1/24-25	Paoli
1/31-2/1	Mad River
2/8	PNS King of the Hill
2/14-15	Battle of OH
2/21-22	Paoli
2/28	PNS Super Nastar
3/1	PNS Memorial Race
3/7-8	WV Gov Cup



What's a SOUP
PARTY, you ask?

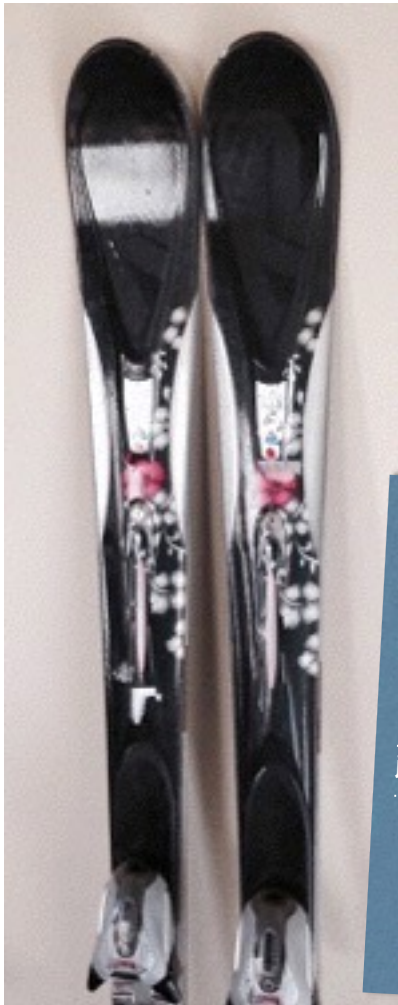
Saturday
February 14th
6:30 pm
Linda's house

For directions
lsgormo@uky.edu

Linda makes the SOUPS!
We bring the other stuff!
And we all eat well!



LSSC Trading Post:
Ski Gear Available
from Club Skiers



K2 Ladies Skis 163cm
 Marker Bindings
 "One Love"
 Contact Jan Clark
 859-533-9571
 janclark@roadrunner.com



BOOTS 4 SALE

Contact Dan Geiger
 859-797-4212
dangeiger17@gmail.com



LADIES HELMETS: BOERI & GIRO



Boeri helmet, Small, Black and silver herringbone design.

Contact Jan Clark



GOGGLES, TOO!
 and a pair of
Scott poles!
**(REALLY? You need
 a picture of poles?)**

Contact Jan Clark



Giro helmet, Small, Solid black, padded helmet bag included.

Contact Jan Clark